



Birthdays

Stan Ferguson
May 6

Sally Griffith
May 12

Laura Kelsheimer
May 12

Joe Gracia
May 15

Allison Williams
May 18

Lisa Azevedo
May 19

Anniversaries

Wes and Jeannie Lingerfelt
May 20

Who is Bringing Snacks?

Robyn Burgess, Jan Ferguson, Laura Kersheimer, and Jeanne Lingerfelt are all bringing pie! Thank you very much!

The Prez Box - May 2025



Greetings, and looking forward to seeing everyone at the next meeting. I have just adopted a small mixed-breed terrier and for some strange reason he already likes picking up rocks and bringing them in the house. I guess he will fit in just fine. Speaking of rocks, I just can't wait to get out there to a new spot and look around. We are very fortunate,

because there are so many great areas right here. And now I have a dog to help me find them!

Get ready for the show, we are starting to line up people for the different jobs so we can have a great upcoming show. Please think about showing off some of your best rocks and specimens or just pick a theme and put it in a display box. I like to just create a 2 ft. by 4 ft. space and start placing rocks...then some labels. That's all it takes and it's great to share your best. Anyway, we will say more about that at the meeting.

I really want to see us do a great job on getting the word out this year. We have such a fantastic club and so many great dealers. So, be ready to help in any way you can and thank you for everything. See you soon.

Joe Goetz
President
Orcutt Mineral Society

May 2025

May 5 at 7:00 pm - Board Meeting in Wes Lingerfelt's Garden

May 10 at 8:00 am - Highway Clean-Up at the SE Corner of Highway 101 and 166.

May 13 at 7:00 pm - General Meeting at the Oasis Senior Center.

Program: Geology of Molokai, Hawaii by Joey Nichols

Display: Rocks you found in Hawaii or volcanic rocks

May 17 - Tentative Fossil Trip to Lompoc Mine. More Details to follow

June 2025

June 2 at 7:00 pm - Board Meeting in Wes Lingerfelt's Garden

No General Meeting in June

June 14 - Potluck at Rotary Park 2637 S. College Dr. Santa Maria, CA 93455
Bring: Rocks for the auction, a side dish or dessert to share, drinks, and your own place settings, table cloth and cutlery.

June Field Trip will be to the Potluck and BBQ on June 14th.

Missing Photos from the March Highway Cleanup

Wayne and the gang did a highway cleanup in March. There were photos attached to page 2 of his report that were not included in the last newsletter. Sorry, Wayne. Here they are.

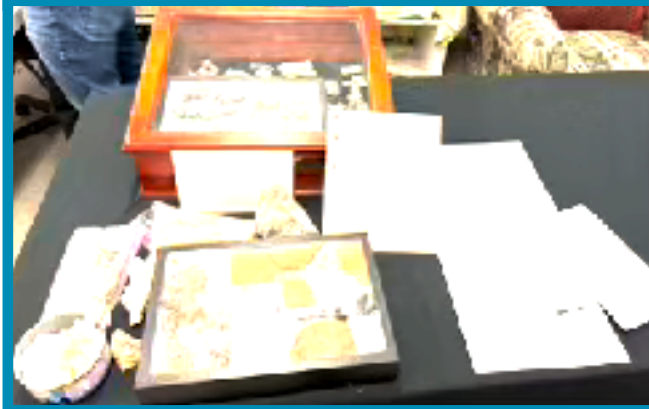
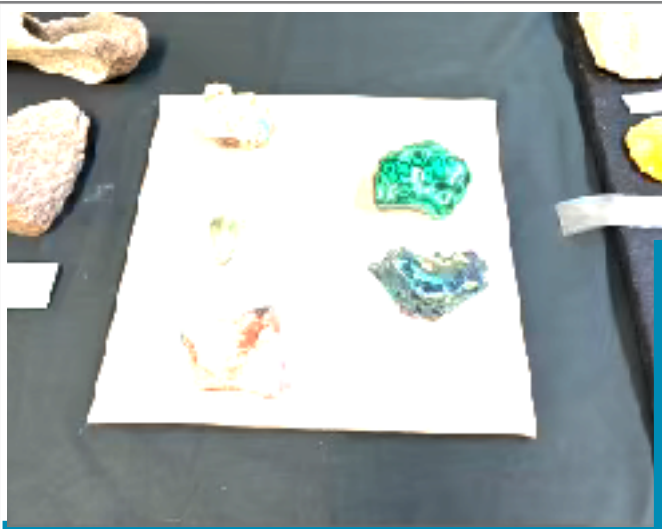


Displays from the April

NEW WEBSITE

<https://www.oms-inc.org>

Please update your web browsers.



Safety Corner - Basic Instructions Using a Tile Saw

From Sonoma State University

1. It is mandatory to be wearing closed-toe shoes, safety glasses, and ear protection when using the tile saw. Loose clothing and jewelry should be removed. Long hair should be tied back. Absolutely no neckties.
2. It is recommended that you use an apron and wear an N95 mask to protect yourself from splashing water and dust.
3. Label your sample and decide where you want to cut the rock.
4. Make sure there is sufficient water in the tray so that the intake of the pump is submerged. If not, fill the tray with water.
5. Hold the rock securely. Some machines may have a vise attachment to hold the rock. This is preferred, but not all machines have this feature.
6. Turn on the power to the machine.
7. Check to see that water is being sprayed onto the saw blade before cutting begins. If not, fill the tray with additional tap water.
8. Keep your fingers well away from the blade. Cut slowly in a straight line. Do not use excessive force while pushing the blade toward the sample. Let the blade do the cutting at its own pace using minimum force.
9. When the cut is complete, turn off the saw.
10. Clean up all rock fragments left on the tile saw.
11. Thoroughly wipe down the machine with a rag, cleaning any water or rock slurry that had sprayed on the machine.
12. Empty the water from the tray as needed for long term storage.

Coal vs. Jet

By Tara Machin

Joey Nichols and I have been overseeing 6th grade field trips to Hollister Ranch near Goleta, CA. On one such trip, we saw black rocks dotting the landscape. We know that there are oil and gas deposits near the area, but is there coal? We got to talking about coal deposits and wondered if coal was related to Jet somehow. Then we wondering if we were really looking at Jet. This got me thinking, what is Jet anyway?

Back in about 2008, I had the privilege of traveling to England to visit some of my husband's relatives. We ended up in the birthplace of the novel Dracula, as one does when visiting in England. Whitby is a very charming seaside town in Yorkshire. There are tall cliffs, an abandoned abby, and very creepy abandoned cemeteries. It is also the home of



Photo of Jet from whamond.com

Continued on page 5

Continued from page 4



Ruins of Whitby Abby



was formed by the exact same processes as Whitby Jet. I would be interested in knowing what type of tree made our local Jet. Maybe our OMS crew will be lucky to find some more and make some jewelry of their own.

<https://www.whitby-jet-jewellery.com/what-is-whitby-jet/>

<https://en.wikipedia.org>

<https://whamond.com/en-us/pages/history-of-whitby-jet>

Whitby Jet.

Whitby Jet came to prominence in the world during the Victorian era, but it has been used a type of adornment since neolithic times. Queen Victoria of England lost her husband, Prince Albert in 1861. After his death, she began wearing mourning clothes and did so for the next 40 years. As fancy, sparkly jewels were not acceptable types of jewelry for mourning, she adopted the custom of wearing black jewelry. This brought Whitby Jet into popularity as a type of gemstone. At the peak of it's popularity, more than 1500 people worked in the Whitby Jet industry including over 200 miners. It is still very popular today and there are many jewelry stores in town with amazing baubles for sale.

Jet is formed similarly to coal. However, Jet is formed from a single piece of wood and coal is formed from layers and layers of loose organic matter. Whitby Jet is mostly formed from an extinct pine tree called *Araucaria araucana*. The tree trunks and limbs fell into rivers and were carried to the ocean where they became waterlogged and sank into the mud. Over millions of years, the tree trunks and limbs slowly decayed and were compressed over time forming the black rocks.

There are two types of Whitby Jet, hard and soft. Soft Jet is not suitable for making jewelry and was formed in fresh water. Hard Jet was formed in ocean water. Jet can be polished into an almost mirror finish. It has a hardness between 2.5 and 4 so it is easy to carve and shape into intricate designs. You can also place inlays into the semiprecious stone so you will see fossils from the surrounding area of Whitby set into pieces of Jet.

Jet can be quite beautiful as jewelry. It is unlikely that the Jet found on Santa Barbara beaches



Whitby Jet with Ammonite Inlay

City of Rocks State Park - Faywood, New Mexico

By Tara Machin

Here is another travel location that should not be missed, the City of Rocks State Park in Faywood, New Mexico. Traveling from Las Cruces, NM to Silver City, NM on highway 180, you pass a sign to the City of Rocks. Being a rockhound, of course I convinced my husband to follow the signs onto NM-61 to this rock metropolis. Since Silver City, NM didn't offer up any interesting geologic sites, we were hoping for better luck at a literal city of rocks.

The city of rocks is mainly a campground with each campsite being nestled into huge rocks. If I were a camping person, I would camp here. Every campsite has a lovely view of rocks and an obstructed view of other campers.

The rocks were formed from a huge volcanic eruption about 35 million years ago. It is estimated that the eruption was 1000 times larger than Mount Saint Helens. The unusual shapes of the rocks were formed from water weathering and freezing and cooling cycles. It is one of the most impressive geologic sites that I have ever seen. I highly recommend a trip.



Upcoming Rock and Mineral Shows

May 2-3, 2025 – Yucaipa, CA
Yucaipa Valley Gem and Mineral Society
Contact: grandpasgems@gmail.com
Website: <http://YVGMS.org>

May 10-11, 2025 – Lancaster, CA
Antelope Valley Gem and Mineral Club
Website: <http://avgem.weebly.com>

May 16-18, 2025 – Vista, CA
Vista Gem and Mineral Society
Contact: info@vistarocks.org
Website: <https://vistarocks.org/events/>

May 30-June 1, 2025 – Reno, NV
Reno Gem and Mineral Society, Inc.
Contact: theresalanhans@yahoo.com
Website: <http://renogms.org>

June 7-8, 2025 – Escondido, CA
Palomar Gem and Mineral Club
Contact: tonifloyd41615@gmail.com
Website: <http://palomargem.org>

June 28-29, 2025 – Culver City, CA
Culver City Rock & Mineral Club
Contact: culvercityrocks35@gmail.com
Website: <https://culvercityrocks.org/fiesta/>



OMS Membership

Membership is \$24.00 for Individual, \$34.00 per couple, \$5.00 Each Additional Family Member, \$5 for Juniors under age of 18. One time initiation fee for new members is \$10.00.

OMS Online Contacts

Website	oms-inc.org
Email	info@oms-inc.org

Copyright 2025 Orcutt Mineral Society. Material in this newsletter may be duplicated provided that credit is given this publication and the author(s). For commercial use, the individual author(s) must be contacted. Editor may be contacted c/o OMS, P.O. Box 106, Santa Maria, Ca. 93456-0106, or via club web site omsinc.org.

Orcutt Mineral Society, Inc.
P.O. Box 106
Santa Maria, CA 93456-0106

ADDRESS CORRECTION REQUESTED

The ORE-CUTTS (named after William Orcutt) was first published in 1966. Member Helen Azevedo was the first editor. The Orcutt Mineral Society was founded in 1958, and was also named after Orcutt who was a geologist and civil engineer who worked in the Santa Maria Valley as a District Manager for Union Oil Company in 1888. In 1889, William Orcutt discovered the mineral and fossil wealth of the La Brea Tar Pits on the property of Captain Alan Hancock in Los Angeles. The La Brea Tar Pits are one of the most significant fossil finds in paleontological history.

OMS is a non-profit organization dedicated to stimulating an interest in the earth sciences. The club offers educational programs, field trips, scholarships, and other opportunities for families and individuals to pursue an interest in the collecting and treatment of lapidary materials, fossils, gems, minerals, and other facets of the Earth Sciences. In addition, another goal of this Society is to promote good fellowship and proper ethics in pursuit of the Society's endeavors. Operating Rules have been set forth to guide the officers and members of the Society in accomplishing these aims. Affiliations of the OMS include American Federation of Mineral Societies, and California Federation of Mineral Societies.

